

Radiology Reports

January 15, 2008

Becky Webster, MSPT

Objectives

- Understand the components of a radiology report
- Determine which components are important for PT
- Apply those components to PT treatment

General Components of a Radiology Report

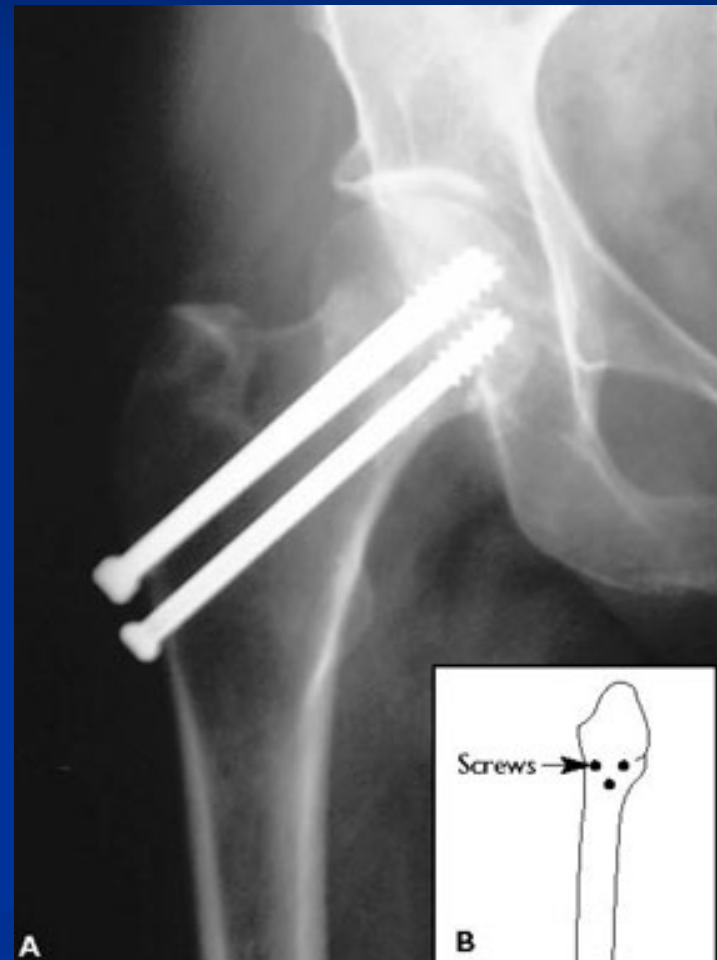
- Heading
- Comparison (if available)
- Clinical History
- Technique
- Findings
- Impression
- Recommendations (optional)

Case #1 Femoral Neck Fracture

- Impacted fracture?
- Frog-leg positioning?
- Possible medical interventions?
- Potential complications?
- Precautions for PT?
- Functional goals for PT?
Inpatient vs. Outpatient?



Case #1 Femoral Neck Fracture



Case #2 Wrist Fracture

- What is this fracture also known as?
- What is a common mechanism of injury?
- What other fracture might you be concerned about and why?
- How long do you anticipate this patient will be casted?
- Goals for PT?



Figure 3. This is an X-ray of a typical distal radius fracture, looking at it from the front (left) and from the side (right). In the pictures, the fracture (broken bone) is indicated by the arrows. The other black spaces are the joints

Case #3 Tibial Plateau Fracture

- How old do you think this patient is? Why?
- How might PT treatment differ between older and younger patients?
- What complications may arise?



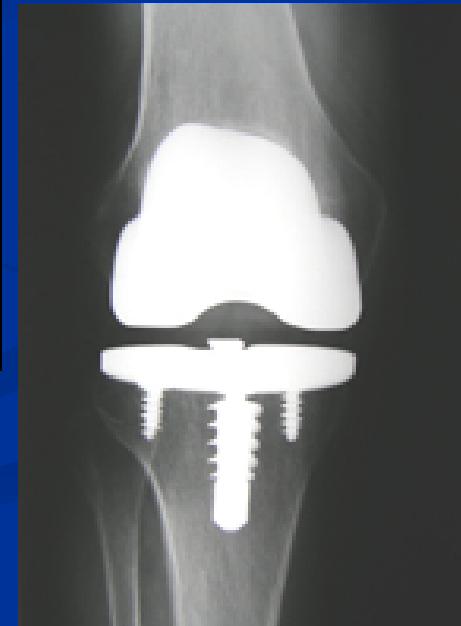
Case #4 Tib/Fib Fracture

- Why CT instead of plain film radiographs?
- Possible surgical interventions?
- Precautions for PT?
- Functional goals for PT? Inpatient vs Outpatient



Case #5 TKR

- Reason for taking x-rays of both knees?
- Hallmarks of OA?
- PT for degenerative changes of the knee in the outpatient setting?
- PT for TKA in the acute setting?



Case #6 L/S

- How might this patient present?
- How is this pathology classified?
- Possible reasons for facet hypertrophy?
- What would you prescribe for PT?



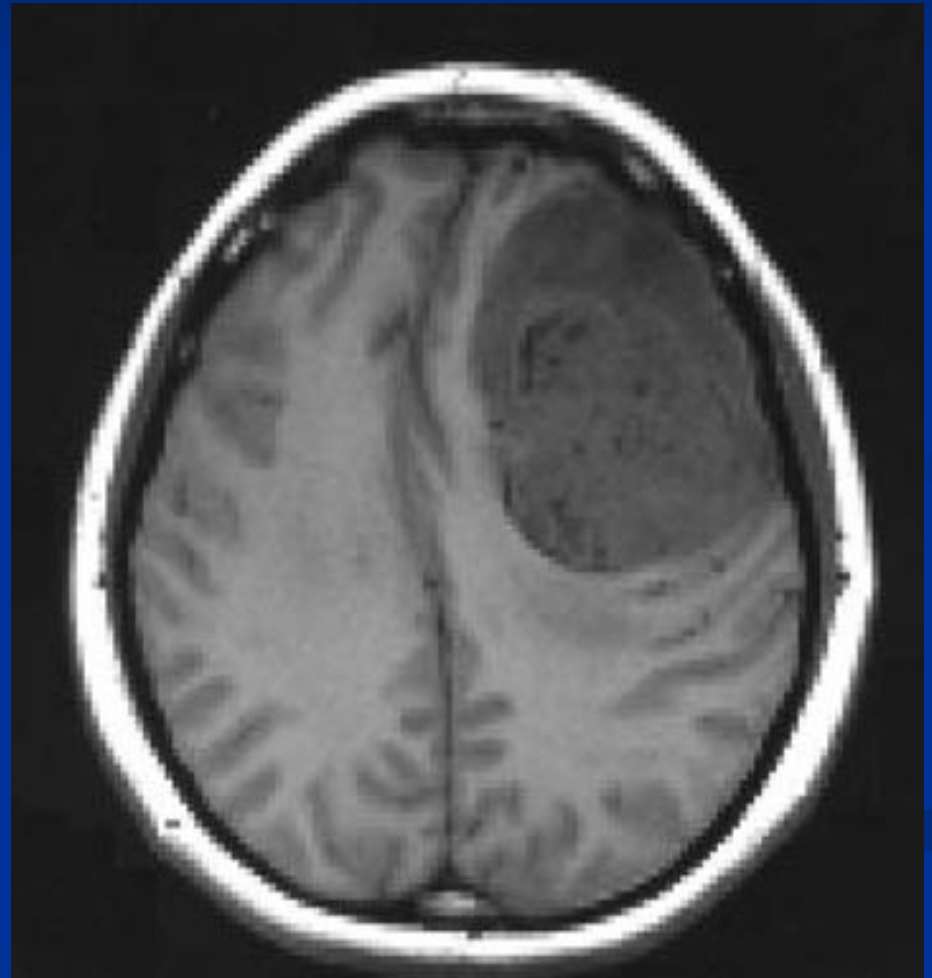
Case #7 C/S

- Signs and symptoms of cervical instability?
- Signs and symptoms of cervical stenosis?
- Causes of osteophyte development?
- Precautions for PT?
- Possible treatment techniques?



Case #5: Non-Contrast CT of Brain

- What pathology do the symptoms suggest?
- Why might CT be chosen instead of MRI?
- Potential reasons for midline shift?



Questions?